

产品名称/Product Name：显示器支架 Mega-duty Monitor Stand











产品型号/Model No. CL101



欢迎订购本产品! 在您开始安装本产品之前, 请先阅读该说明书

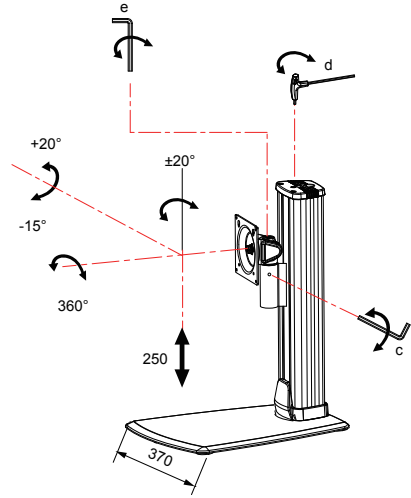
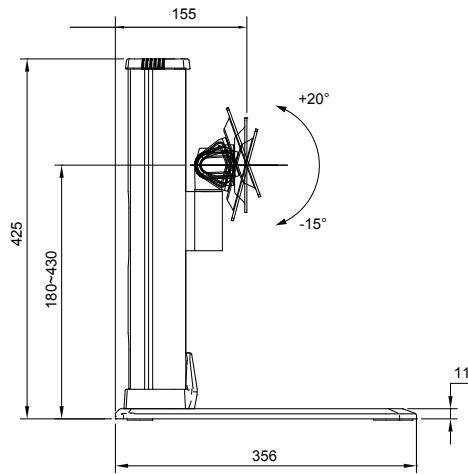
Thanks for buying the product. please read this manual carefully before you start installing this product.

## 技术参数 / Spec Data

											台式安装(mm) Free Landing
显示器尺寸 LCD Size		承重范围(kg) Weight Capacity	升降(mm) Height Adjust	俯仰角度 Tilt	左右摆动 Swivel	旋转 Pivot	VESA	包装箱尺寸 (mm) Packing Size	净重(kg) Net Weight	毛重(kg) Gross Weight	底盘尺寸 Plate Size
16:9	≤34"	≤24	250	-15°~+20°	±25°	360°	75*75	467×407×165	5	6.5	356×370
32:9	≤49"	≤15					100*100				

## 产品外形尺寸 / Product Dimension

单位/Unit: mm



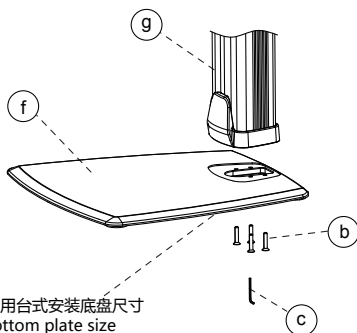
## 产品配件清单 / Parts List

序号 No.	部件示意图 Image	部件名称 Part No.	部件数量 Quantity	序号 No.	部件示意图 Image	部件名称 Part No.	部件数量 Quantity
a		FH-818-4×12	4	e		DN-BS-M6	1
b		FH-7991-5×25	4	f		CL0602	1
c		DN-BS-M3	1	g		CL0511	1
d		DN-TBS-M5	1	h		CL0104	1

## 安装步骤 / Installation Procedure

## 1 立柱安装

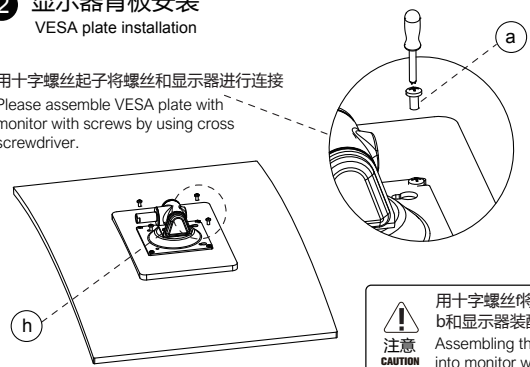
Main body assembly



## 2 显示器背板安装

VESA plate installation

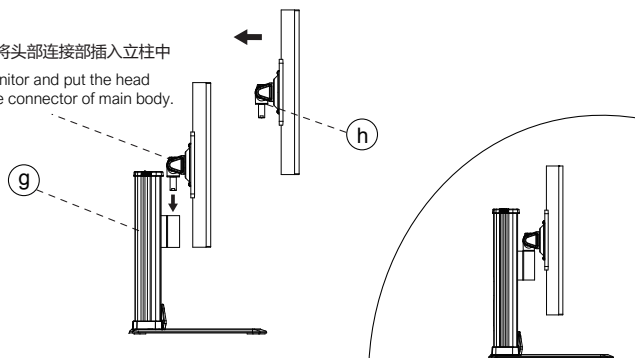
用十字螺丝起子将螺丝和显示器进行连接  
Please assemble VESA plate with monitor with screws by using cross screwdriver.



## 安装步骤 / Installation Procedure

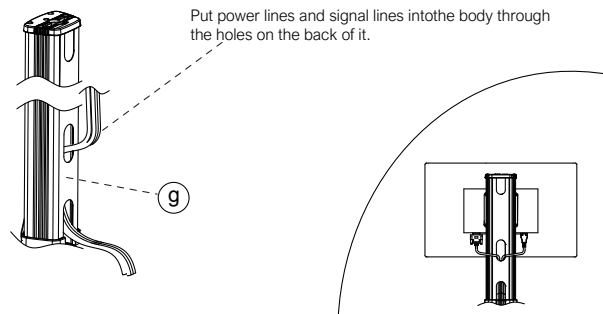
### 3 显示器安装 Installation of monitor

抬起显示屏将头部连接部插入立柱中  
Hold the monitor and put the head shaft into the connector of main body.



### 4 过线安装 Cable management

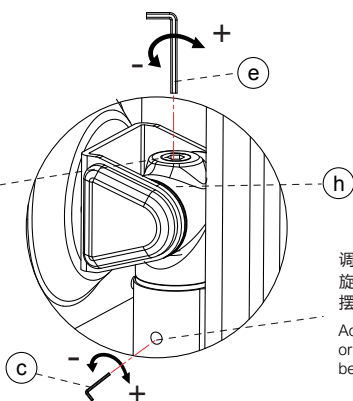
选择立柱背部合适工口，将电源线和信号线  
沿立柱背部开口依次穿入  
Put power lines and signal lines into the body through  
the holes on the back of it.



## 显示屏调节 / Monitor Adjustment

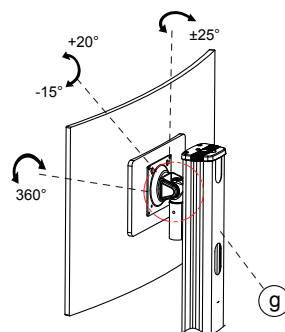
调节此处可以增大或减小旋转阻尼，  
使显示器的倾仰更加顺畅。

Adjusting tilt joint by tightening  
or loosening this screw to achieve  
smoother tilting experience.



调节此处可以增大或减小  
旋转阻尼，使显示器的侧向  
摆动更加顺畅。

Adjusting tilt joint by tightening  
or loosening this screw to achieve  
better swivel experience.



1. 不要超过额定承重，否则可能会造成显示器损坏或人身伤害。

1. Never overload it. Otherwise, it may cause damage to monitor or human body.

2. 请务必按照说明书的要求来安装，不正确的安装可能会导致产品损坏或人身伤害。

2. Please strictly follow the procedures in this manual for installation. Wrong installation may cause damage to product or human body.

3. 请使用我们配备的工具和配件安装，否则可能会造成产品损坏。

3. Please use the tools and parts provided by us. Otherwise, it may cause damage to product.

4. 确保安装基座能够安全支撑设备和所有配件的重量。

4. Make sure you desk/table is strong enough to support the product and all its parts.

5. 本产品包含小的部件，如果被吞咽会造成严重人身伤害，请放置在儿童接触不到的地方。

5. This product contains small parts. It will cause personal injury if swallowed. Please put them beyond the places children can reach.

6. 请勿在支架组装完成前，安装显示器。

6. Please install monitor after assembling this product.

7. 在调节显示器前请确认显示器是否已经固定牢固。

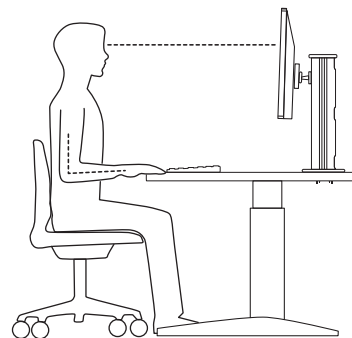
7. Please make sure you monitor is fixed properly before you adjust it.

8. 不要擅自拆开或更换支架臂。

8. Please don't disassemble or exchange the arm of this product arbitrarily.



**警告**  
**WARNING**



生产公司：福建九兆智能科技有限公司

Manufacturer: FUJIAN ETERNAL INTELLIGENT TECHNOLOGY CO., LTD

生产地址：福建省漳州市长泰经济开发区兴泰工业园区103号

Address: No 103, Xingtai Industrial Park, Changtai Economic Development Zone, Zhangzhou City, Fujian Province.

销售公司：上海慧想办公用品有限公司

Sales Company: Shanhai Thinkwise Industrial Co., Ltd

联系地址：上海市浦东新区川宏路230号12号楼

Address: Building 12, No. 230 Chuanhong Road, Pudong new district, Shanghai City.

服务电话/Telephone: 400-600-5155

网址/Homepage: www.thinkwise.com.cn